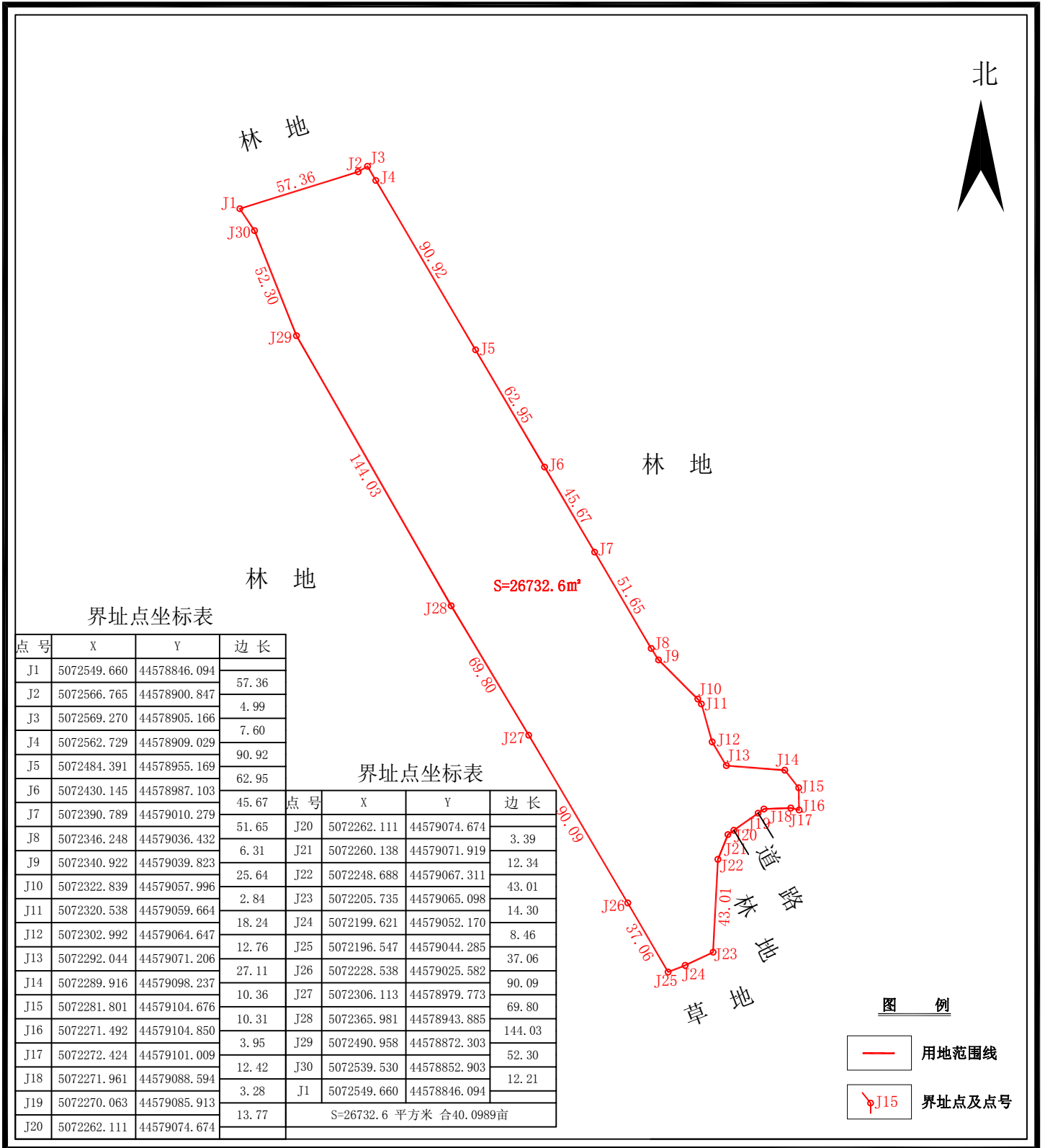


虎林市烈士陵园用地勘测定界图

单位: m.m²



界址点坐标表

点号	X	Y	边长
J1	5072549.660	44578846.094	57.36
J2	5072566.765	44578900.847	4.99
J3	5072569.270	44578905.166	7.60
J4	5072562.729	44578909.029	90.92
J5	5072484.391	44578955.169	62.95
J6	5072430.145	44578987.103	45.67
J7	5072390.789	44579010.279	51.65
J8	5072346.248	44579036.432	6.31
J9	5072340.922	44579039.823	25.64
J10	5072322.839	44579057.996	2.84
J11	5072320.538	44579059.664	18.24
J12	5072302.992	44579064.647	12.76
J13	5072292.044	44579071.206	27.11
J14	5072289.916	44579098.237	10.36
J15	5072281.801	44579104.676	10.31
J16	5072271.492	44579104.850	3.95
J17	5072272.424	44579101.009	12.42
J18	5072271.961	44579088.594	3.28
J19	5072270.063	44579085.913	13.77
J20	5072262.111	44579074.674	

界址点坐标表

点号	X	Y	边长
J20	5072262.111	44579074.674	3.39
J21	5072260.138	44579071.919	12.34
J22	5072248.688	44579067.311	43.01
J23	5072205.735	44579065.098	14.30
J24	5072199.621	44579052.170	8.46
J25	5072196.547	44579044.285	37.06
J26	5072228.538	44579025.582	90.09
J27	5072306.113	44578979.773	69.80
J28	5072365.981	44578943.885	144.03
J29	5072490.958	44578872.303	52.30
J30	5072539.530	44578852.903	12.21
J1	5072549.660	44578846.094	

图例

- 用地范围线
- J15 界址点及点号

虎林北工精诚测绘服务有限公司

2024年08月16日数字化制图
CGCS2000国家大地坐标系、3度分带
土地勘测定界规程 TD/T 1008--2007

1:2600

测量员: 李 铁
绘图员: 王 娟
审核员: 郝广钧